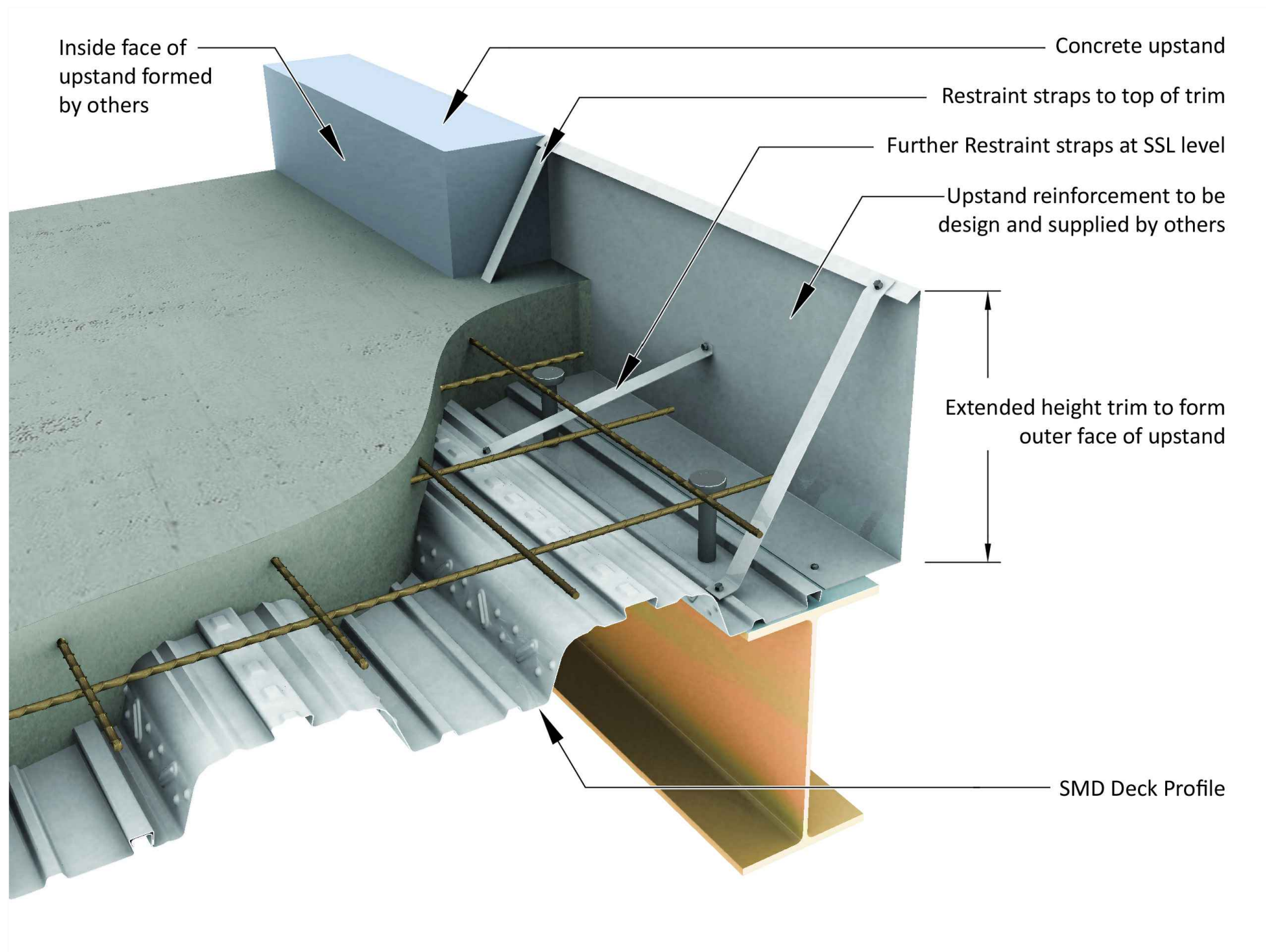
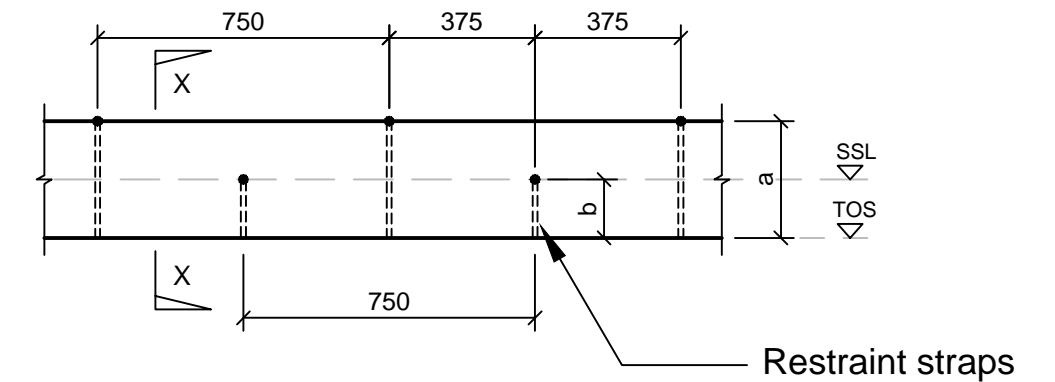


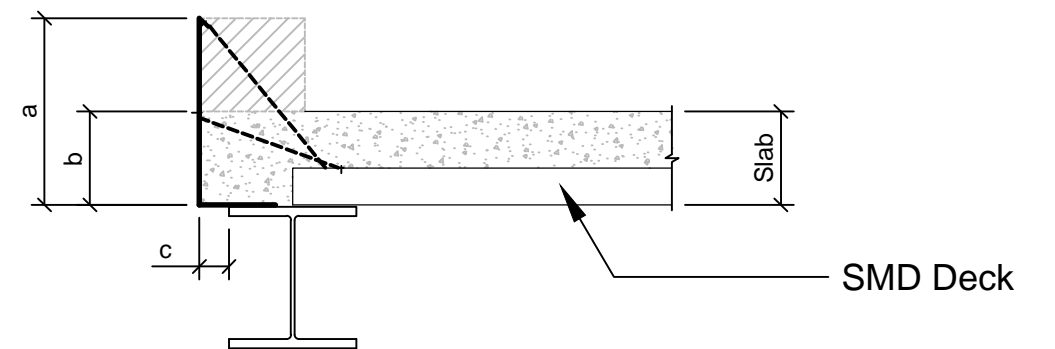
Trim Double restraint straps



Elevation:



Section X-X:



Where edge trim height is requested between 250mm and 450mm high, SMD require 2 sets of restraint straps to minimise the deflection in the face of the trim. One set of straps are required to the top of edge trim (a) at 750mm c/c's and a second set to the middle of the trim upstand (b) at 750mm c/c's staggered between the straps to the top of the trim (As shown above).

In some cases SMD are requested to fix the upper restraint strap (a) to the top of the trim but not to the deck as this can obstruct the installation of reinforcement in the upstand. In this case the upper restraint strap is fixed to the shuttering (by others) which forms the inside face of the upstand at a later date.

Cost:-

Due to the increased height trim the gauge of the trim is also increased to help minimise deflection. The overall girth and increased gauge will increase the cost of trim.